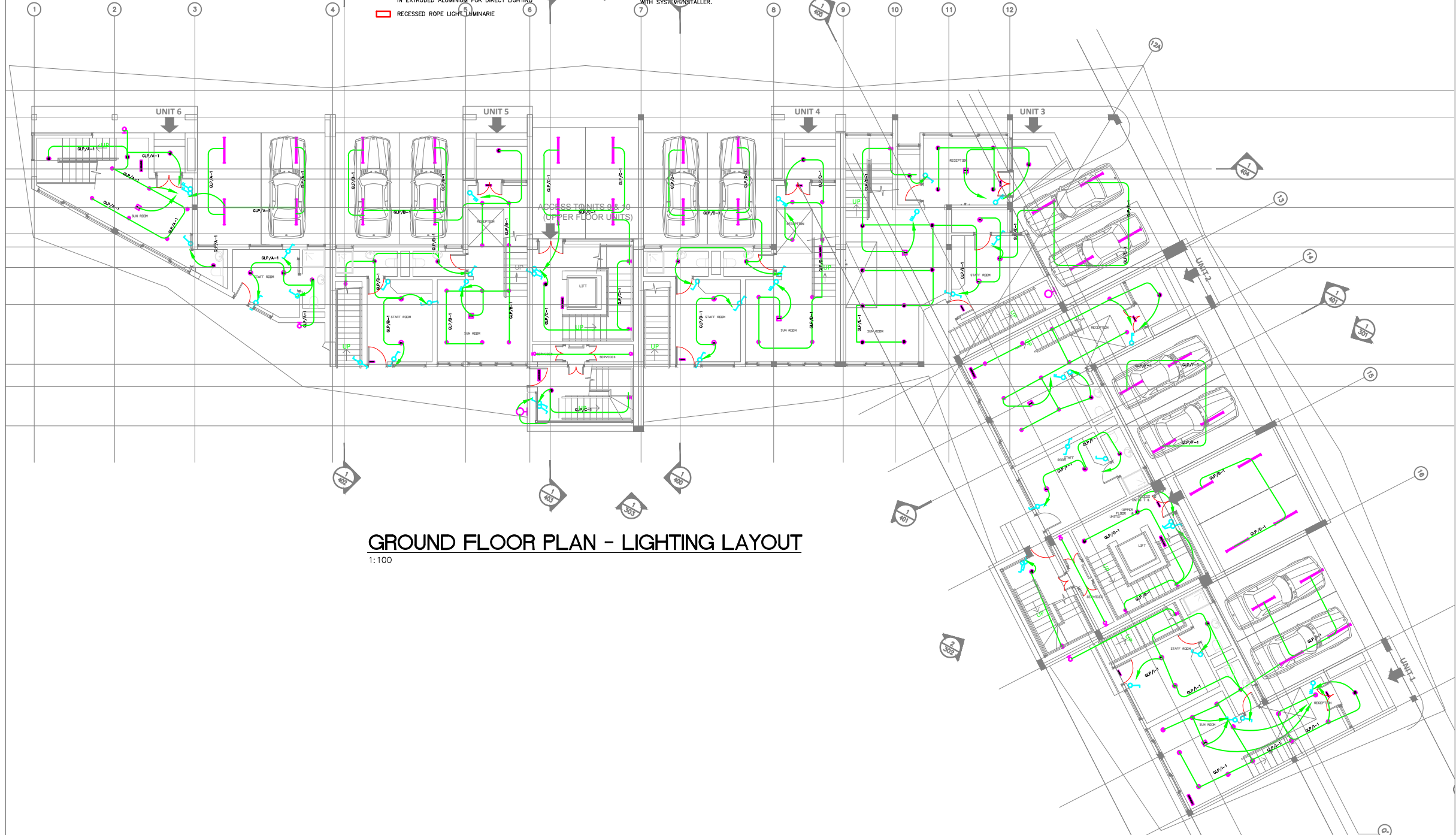


SHEET LEGEND

- 1 X E-27 MAX. 16W RECESSED LED LIGHT.
- 1 X E-27 Max. 60W MABEL CEILING LIGHT. (MASSIVE - 30255/30/10)
- 1 X E27 MAX. 25W/230V BROOKS TOILET LIGHT (MASSIVE 32025/31/10)
- 2 X 18W LED RECESSED DOWN LIGHT L&P.
- 4 X E27 100W MOIRA CEILING LIGHT. (MASSIVE-30204/86/10)
- 1 X G100 Max. 40W BELINDA CEILING LIGHT. (MASSIVE - 308003/31/10)
- DIVALUCE LIGHTING FITTINGS MANOCHINA WALL MOUNTED LUMINAIRE IN EXTRUDED ALUMINIUM FOR DIRECT LIGHTING
- RECESSED ROPE LIGHT LUMINAIRE
- 2 X 35W HALIC SLIM U TYPE WATERPROOF FLUORESCENT LIGHT. (GECEM - GCWH 235 116E)
- DECORATIVE CEILING LIGHT : PARMA (458-NS) CHROME FINISH 2 X G2A33 26W/DIA:330mm CEILING MOUNTED LIGHT FITTING LA CREU
- 2 X 26W LED RECESSED DOWN LIGHT L&P.
- MASSIVE CATALOGUE (32093/11/10) .
- DIRECTIONAL EMERGENCY LIGHT.

SHEET NOTES

- ① TYPICAL 75 x 75mm CONNECTION BOX FOR EXTRACTION FAN POWER TERMINATION. EXACT POSITION TO BE FIELD COORDINATED WITH SYSTEM INSTALLER.



GROUND FLOOR PLAN - LIGHTING LAYOUT
1:100

client :

project :
PROPOSED RESIDENTIAL DEVELOPMENT AT

Architects:
LATERAL DESIGN CONCEPTS
42 ODUDUWA CRESCENT G.R.A IKEJA, LAGOS
TEL: 0703 512 9444
ADMIN@LATERALDESIGNCONCEPTS.COM
WWW.LATERALDESIGNCONCEPTS.COM

Consulting Engineers;
SODAC TECHNOLOGY SERVICES
MECHANICAL & ELECTRICAL SERVICES
82, wosilatu steet, pako aguda
Surulere, lagos.
Tel. 01- 9511681 , M 08023145007

drawing title :	GROUND FLOOR PLAN LIGHTING LAYOUT	
designed :	LA	date: JULY,2017.
checked :	DOP	drawing no: E201
scale:	1:100	

signature / seal :